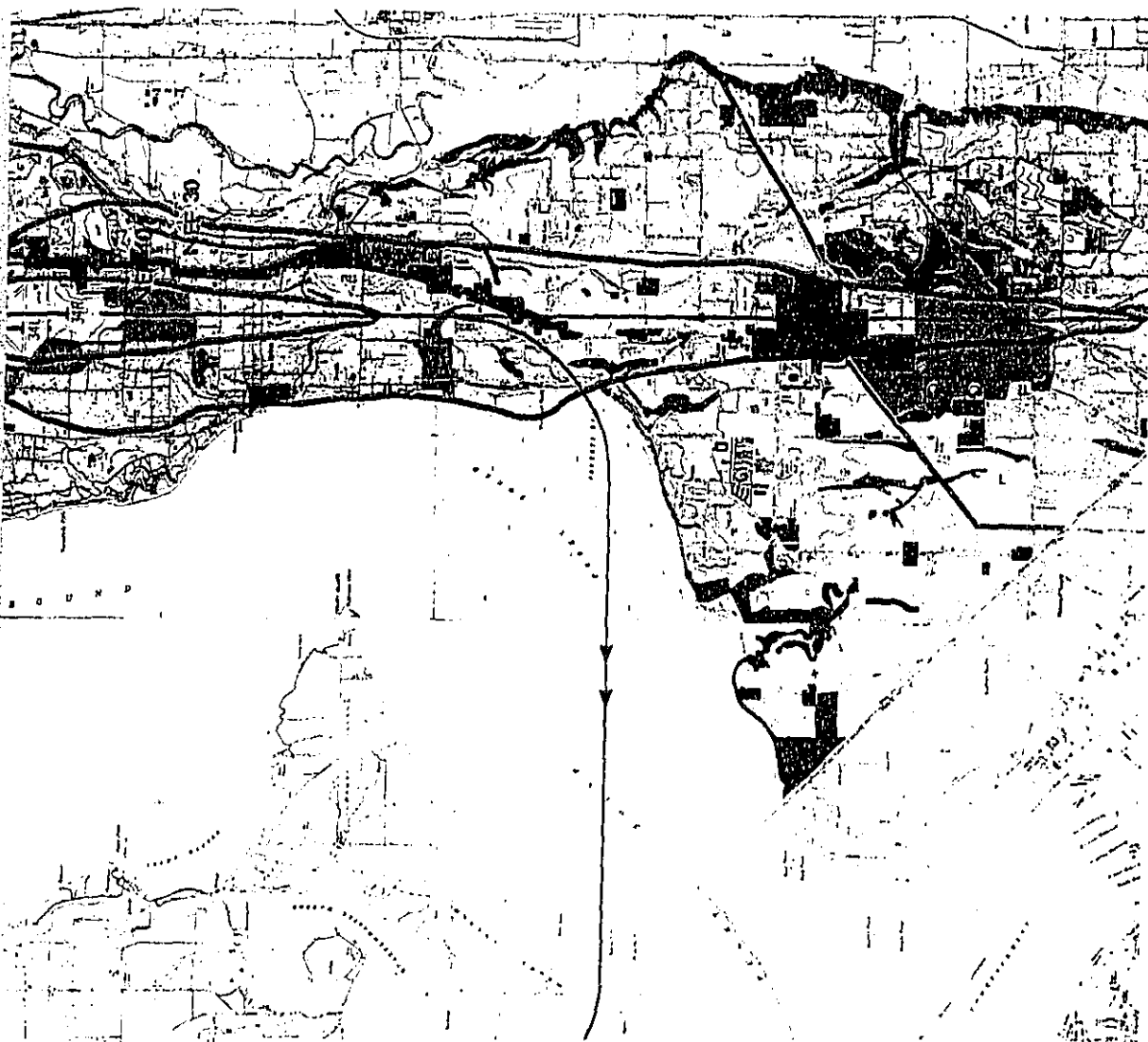


7-96-01

II-A-952



SEA-1  
TACOMA INTERNATIONAL AIRPORT (SEA)  
NE EXPOSURE FORECAST (NEF) 30/40  
EXISTED BASELINE AIRCRAFT DAILY OPERATIONS



SCALE: 1" = 8,000'

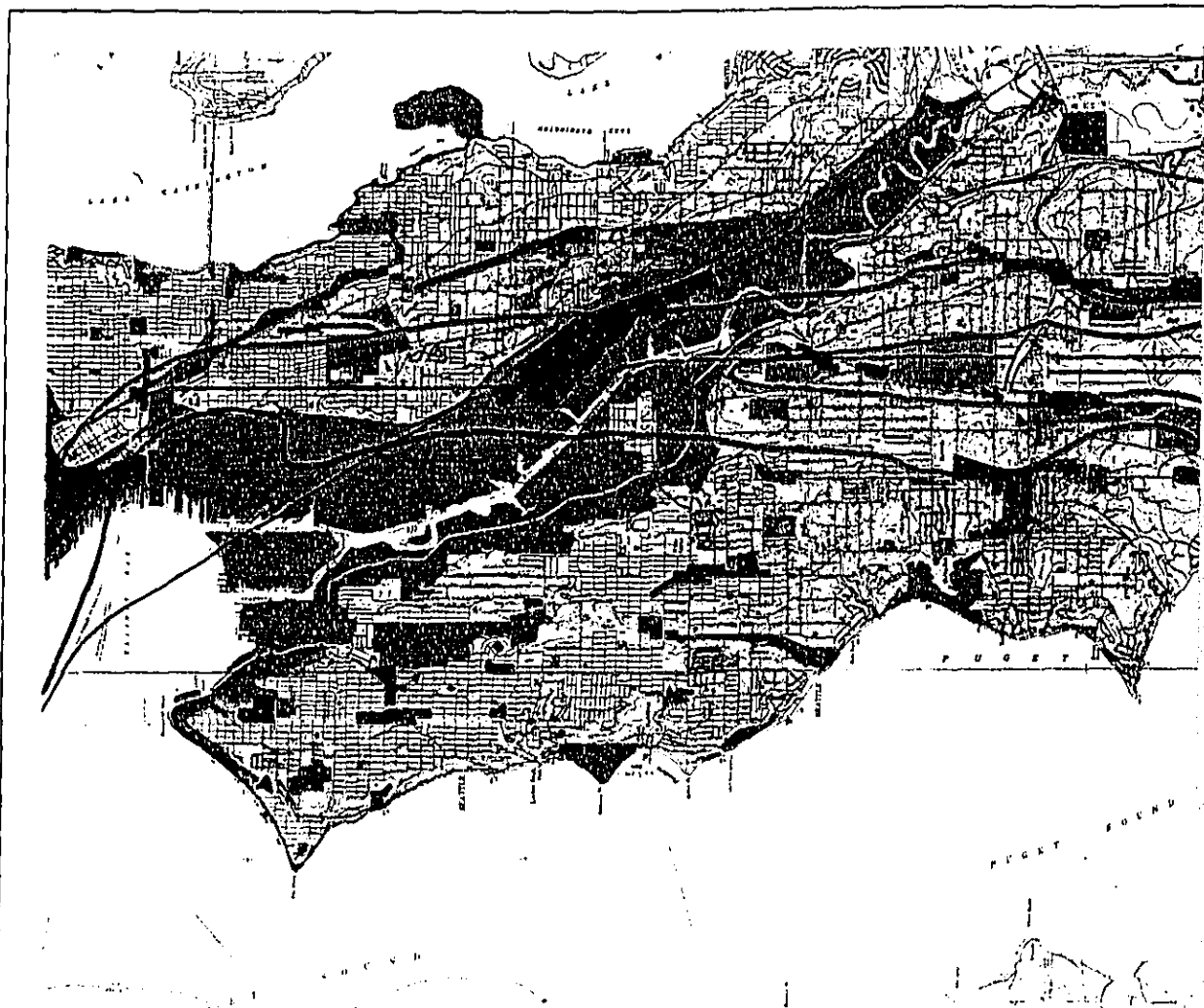
# **CORRECTION!**

**THE PREVIOUS DOCUMENT(S)  
MAY HAVE BEEN FILMED  
INCORRECTLY ...**





# **RESHOOT FOLLOWS!**

**B&B Information & Image Management  
300 Prince George's Boulevard  
Upper Marlboro, Maryland 20772  
(301) 249-0110**

**SECTIONED DOCUMENT**



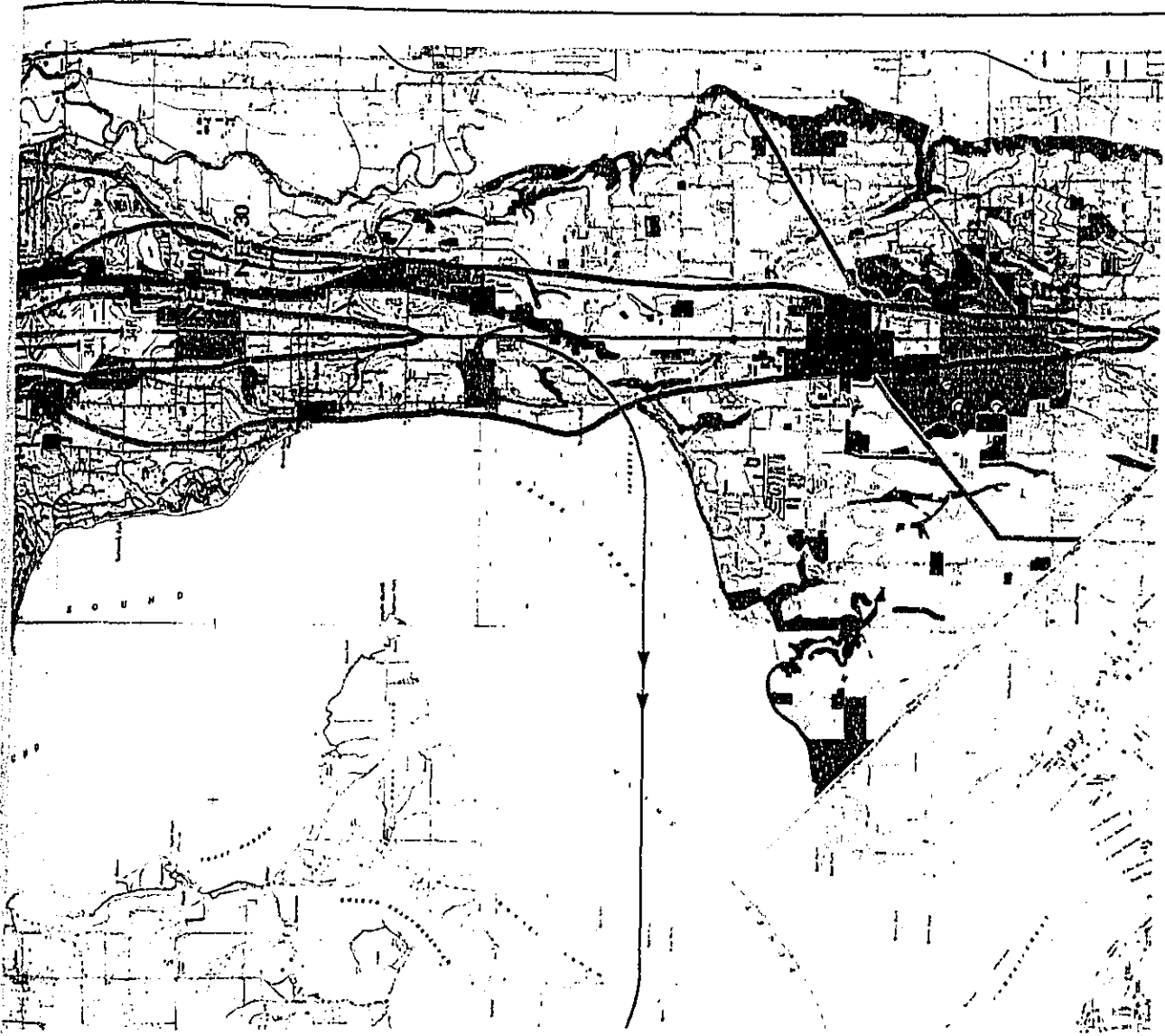
**LAND USE LEGEND**

-  Parks, Recreation, Open Space
-  Residential and Institutional (Includes Schools and Hospitals)
-  Commercial (Includes Offices and General Business)
-  Industrial/Manufacturing

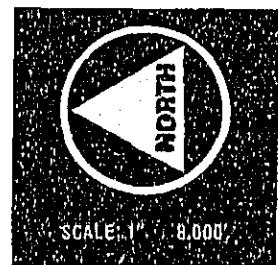


**FIGURE  
SEATTLE  
1978 NON-  
FORECAST**

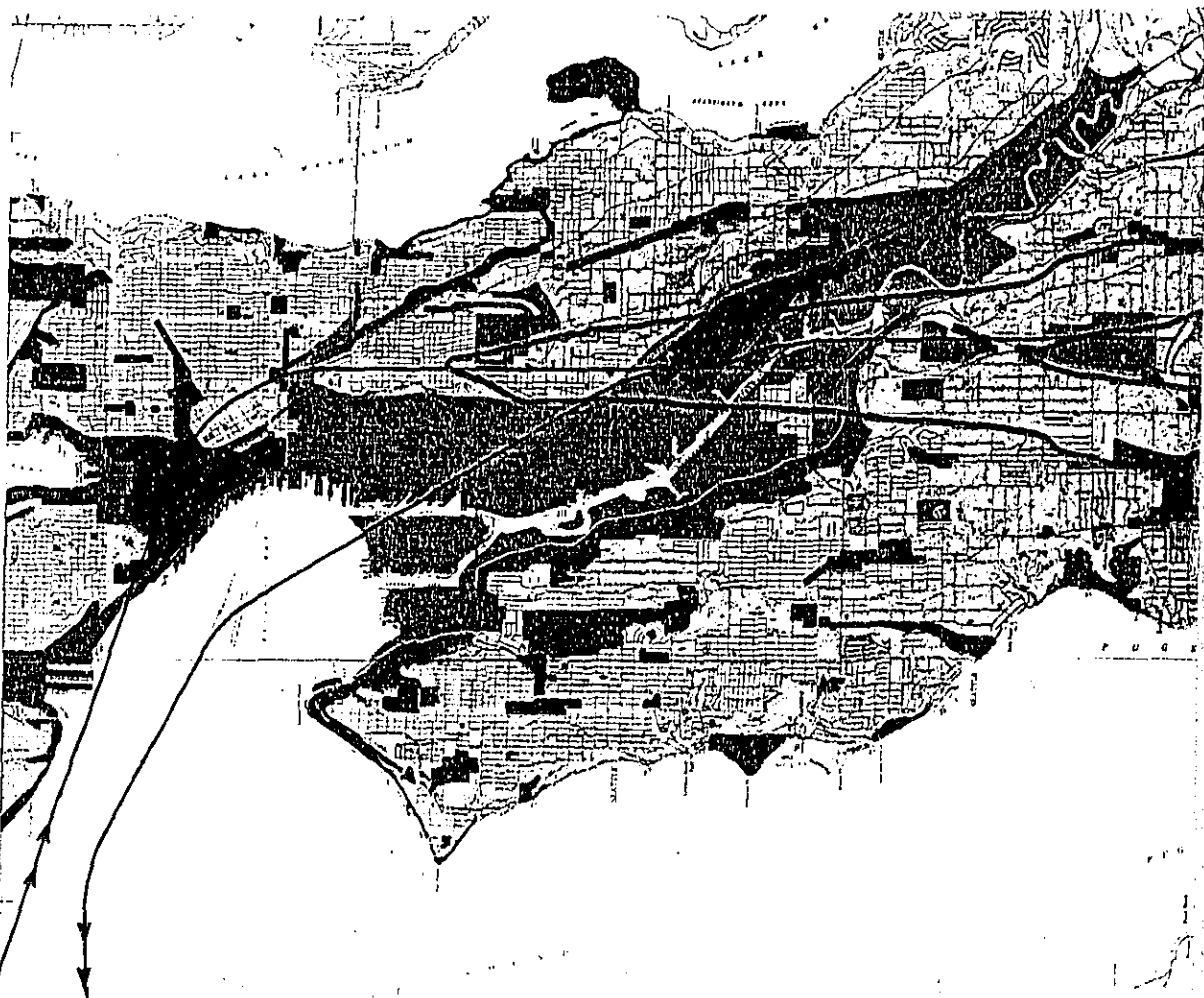
**SECTIONED DOCUMENT**






**FIGURE SEA-1**  
**SEATTLE-TACOMA INTERNATIONAL AIRPORT (SEA)**  
**NOISE EXPOSURE FORECAST (NEF) 30/40**  
**FORECASTED BASELINE AIRCRAFT DAILY OPERATIONS**

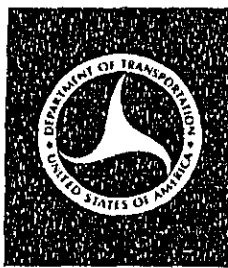


**SECTIONED DOCUMENT**



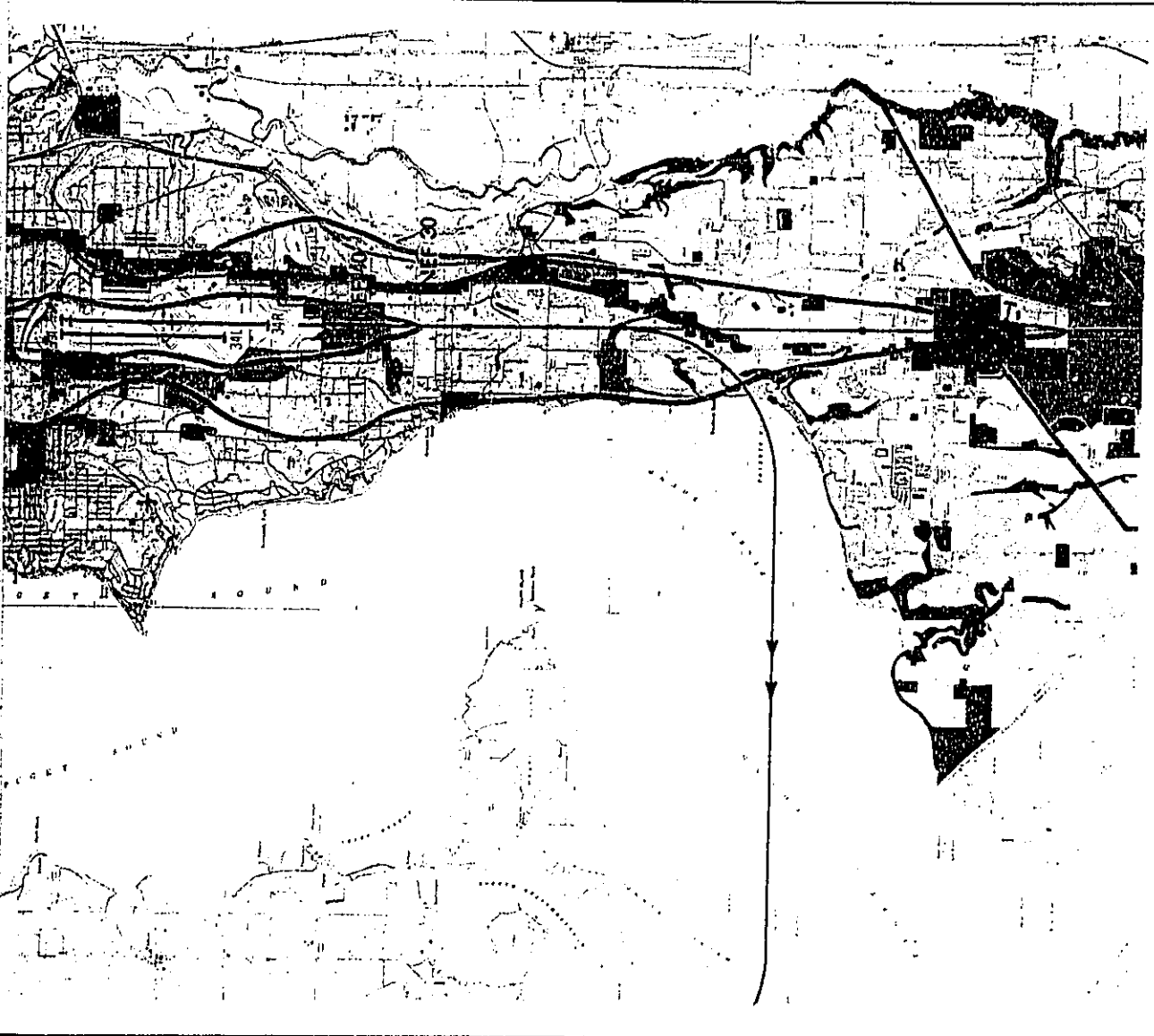
**LAND USE LEGEND**

-  Parks, Recreation, Open Space
-  Residential and Institutional  
(Includes Schools and Hospitals)
-  Commercial (Includes Offices  
and General Business)
-  Industrial/Manufacturing

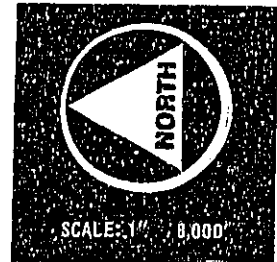


**FIGURE SEA-5  
SEATTLE-TACOMA  
1987 NOISE EXPOSURE  
FORECASTED BASED ON  
ALL JT3D AND JT8**

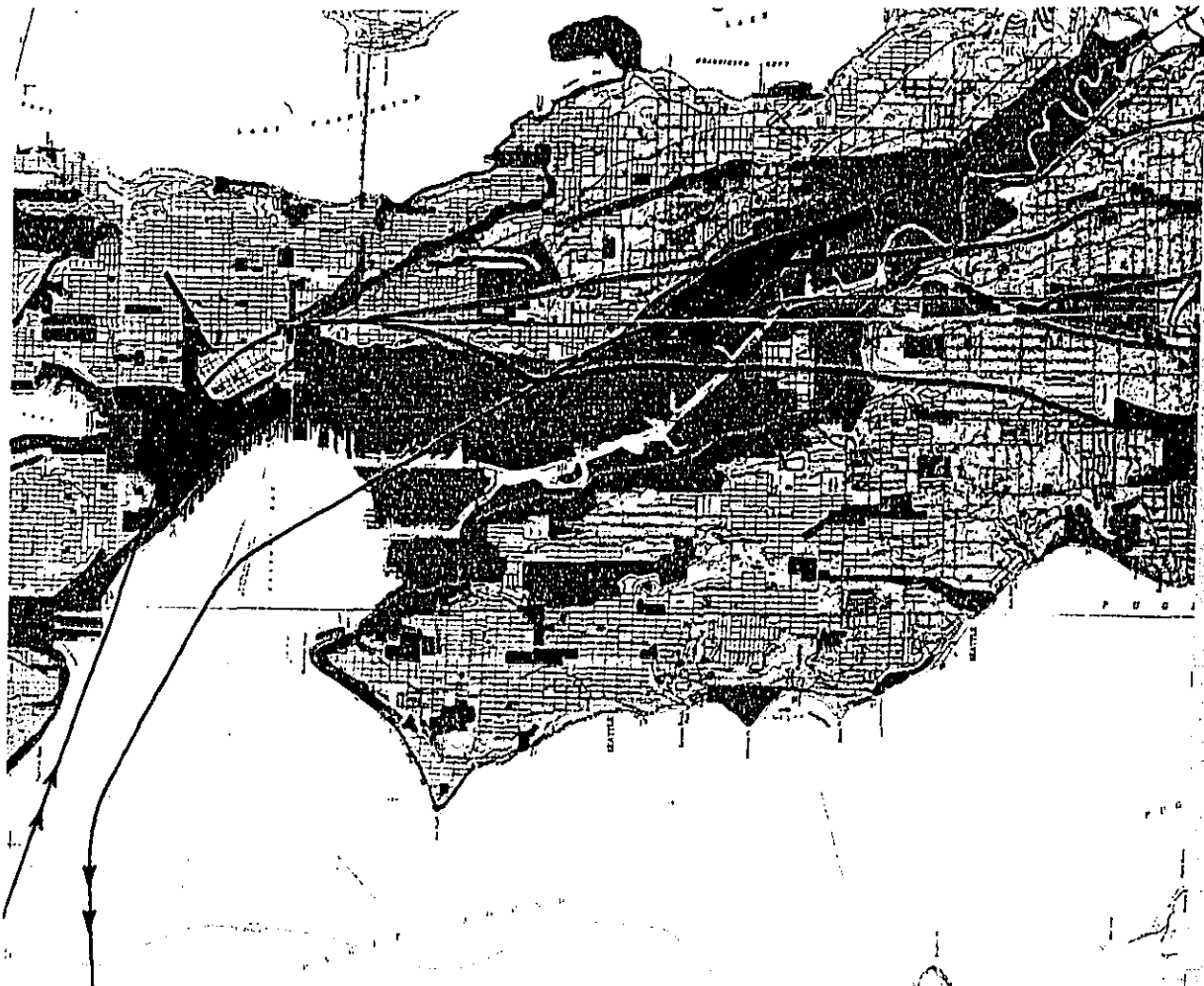
**SECTIONED DOCUMENT**







1-5  
OMA INTERNATIONAL AIRPORT (SEA)  
EXPOSURE FORECAST (NEF) 30/40  
BASELINE AIRCRAFT DAILY OPERATIONS  
JT8D ENGINES TREATED WITH QUIET NACELLES

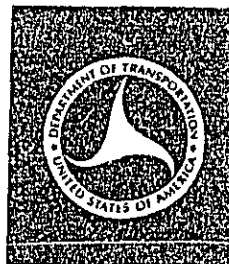


SECTIONED DOCUMENT



**LAND USE LEGEND**

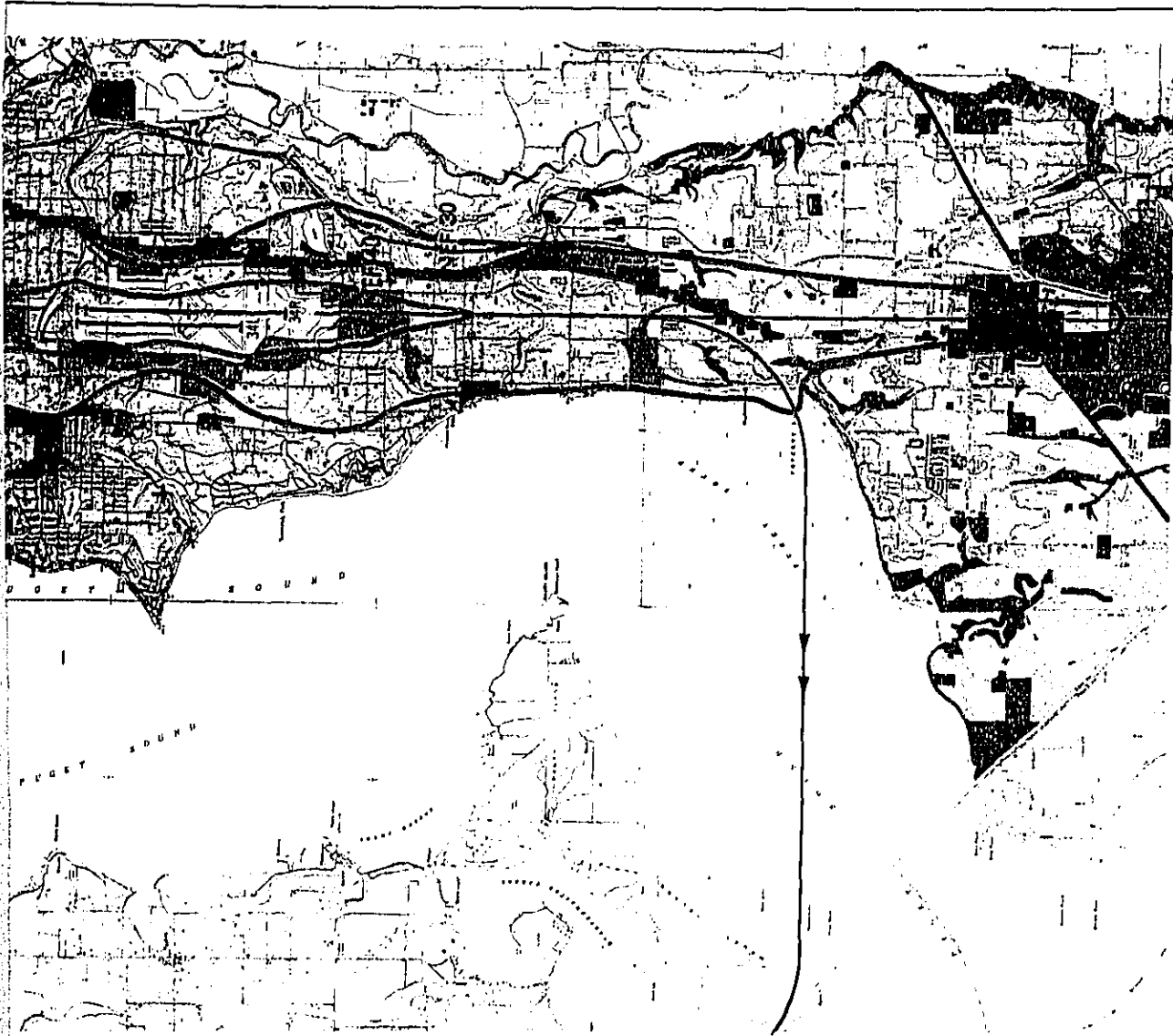
-  Parks, Recreation, Open Space
-  Residential and Institutional  
(Includes Schools and Hospitals)
-  Commercial (Includes Offices  
and General Business)
-  Industrial/Manufacturing



**FIGURE SEA-1  
SEATTLE-TACOMA  
1987 NOISE EXPOSURE  
FORECASTED BY  
ALL JT3D AND J  
2 CONCORDE  
CONCORDE TA**

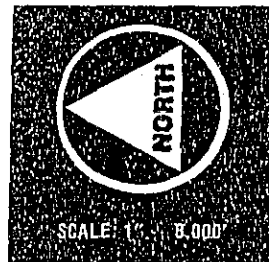
**SECTIONED DOCUMENT**





**EA-6**

**TACOMA INTERNATIONAL AIRPORT (SEA)  
EXPOSURE FORECAST (NEF) 30/40  
MODIFIED BASELINE AIRCRAFT DAILY OPERATIONS (MODIFIED)  
AND JT8D ENGINES TREATED WITH QUIET NACELLES  
OPERATIONS DAILY (1 FLIGHT)  
TAKEOFFS USE 3% GRADIENT CUTBACK PROCEDURE**



**SECTIONED DOCUMENT**