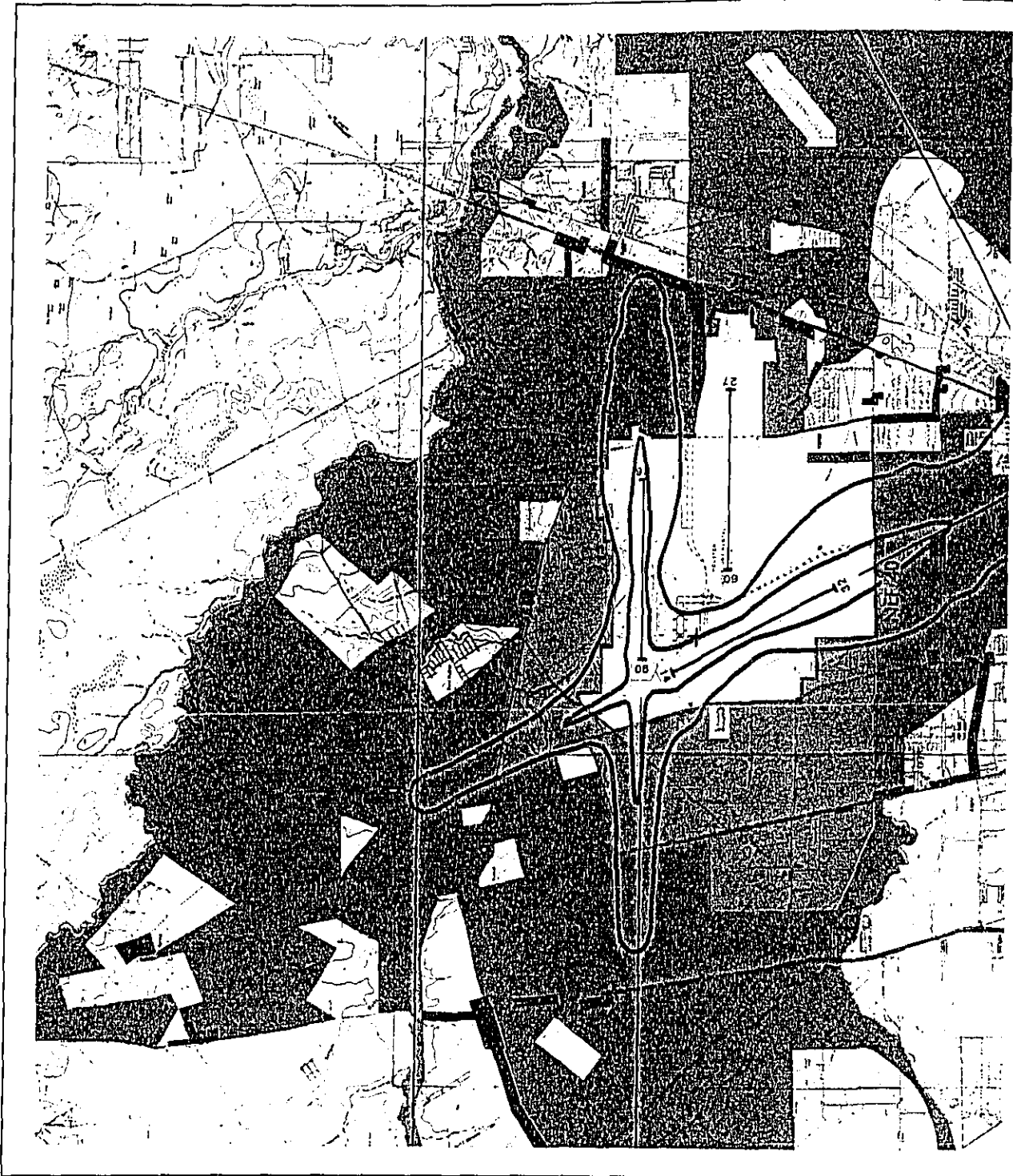
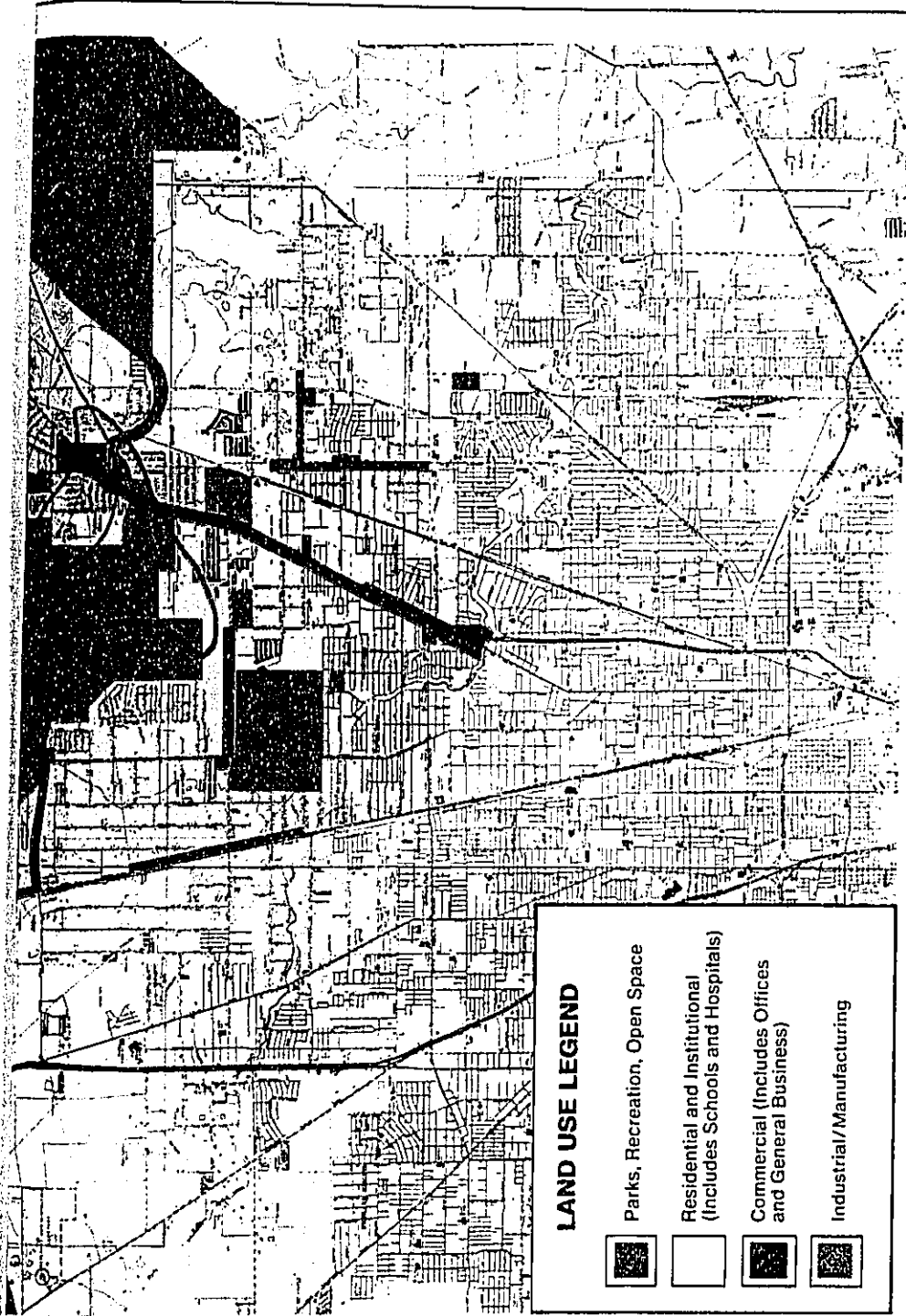






A-96-01
II-A-945



SECTIONED DOCUMENT

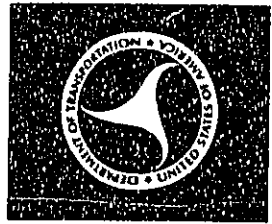


LAND USE LEGEND

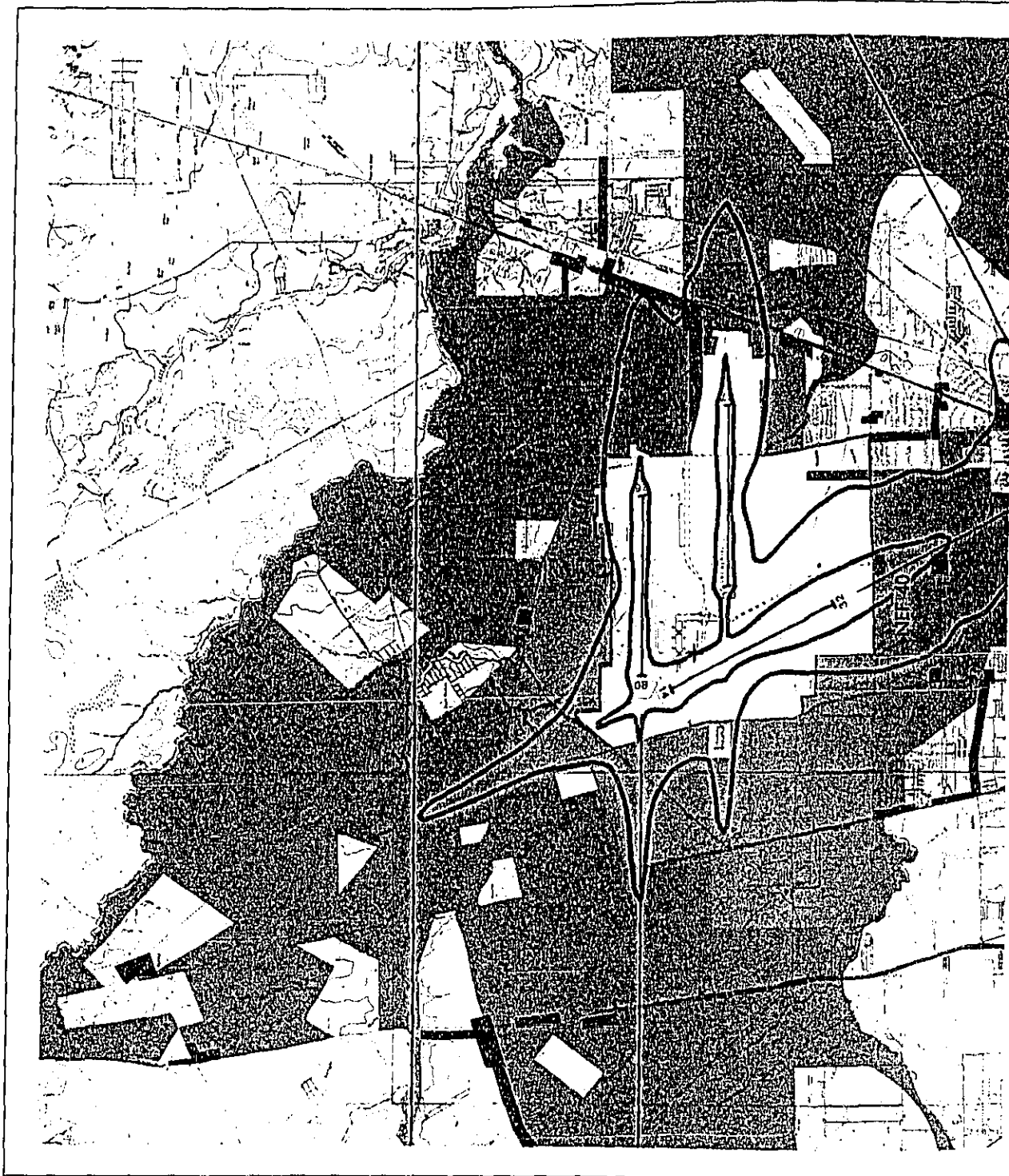
-  Parks, Recreation, Open Space
-  Residential and Institutional
(Includes Schools and Hospitals)
-  Commercial (Includes Offices
and General Business)
-  Industrial/Manufacturing



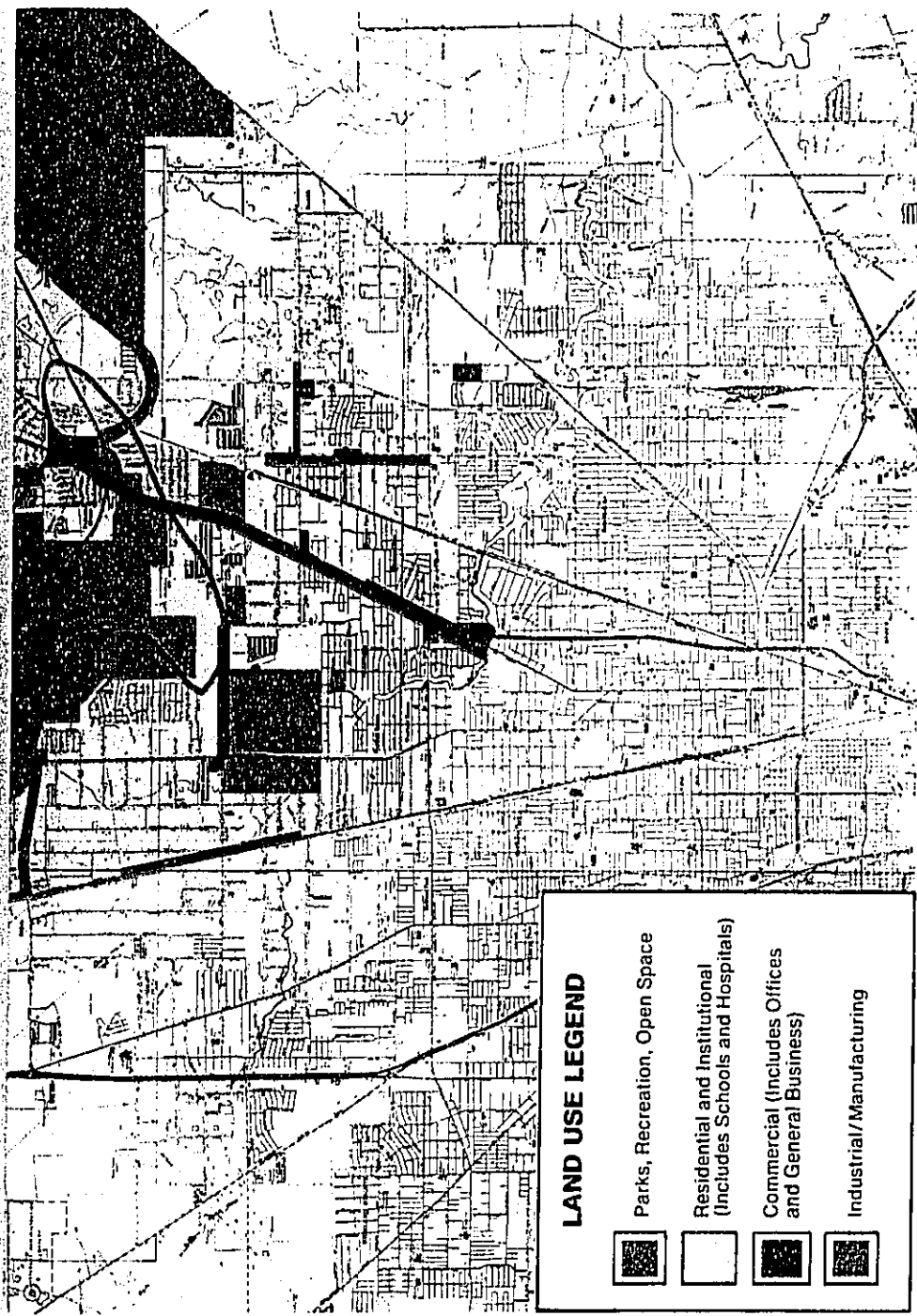
**FIGURE IAH-1
HOUSTON INTERCONTINENTAL AIRPORT (IAH)
1978 NOISE EXPOSURE FORECAST (NEF) 30/40
FORECASTED BASELINE AIRCRAFT DAILY OPERATIONS**







SECTIONED DOCUMENT




SECTIONED DOCUMENT



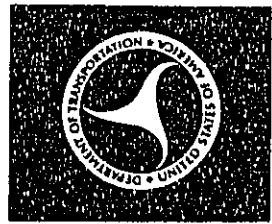
LAND USE LEGEND

	Parks, Recreation, Open Space
	Residential and Institutional (Includes Schools and Hospitals)
	Commercial (Includes Offices and General Business)
	Industrial/Manufacturing

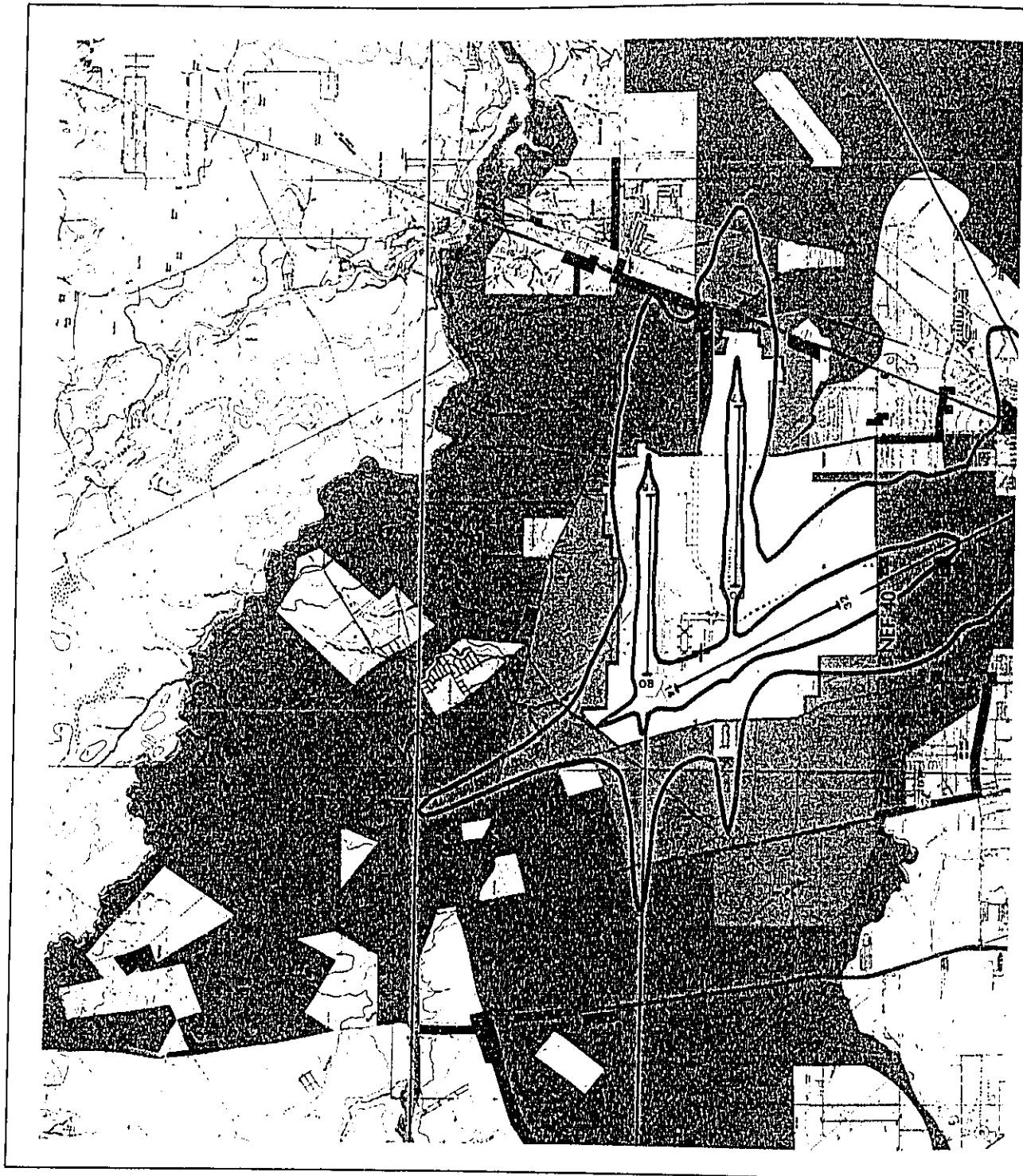


SCALE: 1" = 8,000'

FIGURE IAH-5
HOUSTON INTERCONTINENTAL AIRPORT (IAH)
1987 NOISE EXPOSURE FORECAST (NEF) 30/40
FORECASTED BASELINE AIRCRAFT DAILY OPERATIONS
ALL JT3D AND JT8D ENGINES TREATED WITH QUIET NACELLES

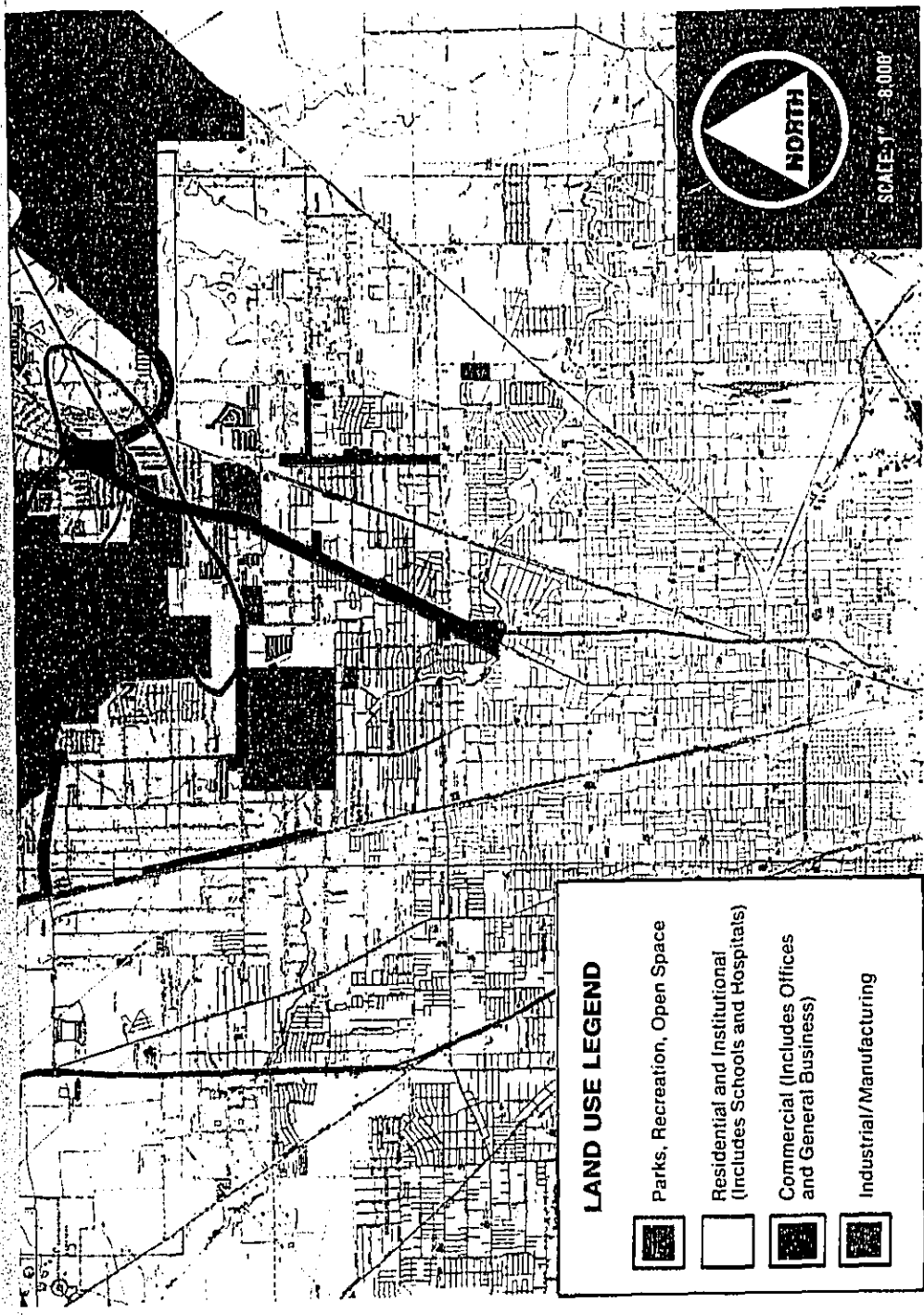


SECTIONED DOCUMENT







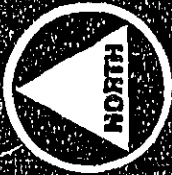
SECTIONED DOCUMENT

SECTIONED DOCUMENT



LAND USE LEGEND

-  Parks, Recreation, Open Space
-  Residential and Institutional (Includes Schools and Hospitals)
-  Commercial (Includes Offices and General Business)
-  Industrial/Manufacturing

 NORTH

SCALE: 1" = 8,000'

FIGURE IAH-6
HOUSTON INTERCONTINENTAL AIRPORT (IAH)
1987 NOISE EXPOSURE FORECAST (NEF) 30/40
FORECASTED BASELINE AIRCRAFT DAILY OPERATIONS (MODIFIED)
ALL JT3D AND JT8D ENGINES TREATED WITH QUIET NACELLES
6 CONCORDE OPERATIONS WEEKLY (3 FLIGHTS)

