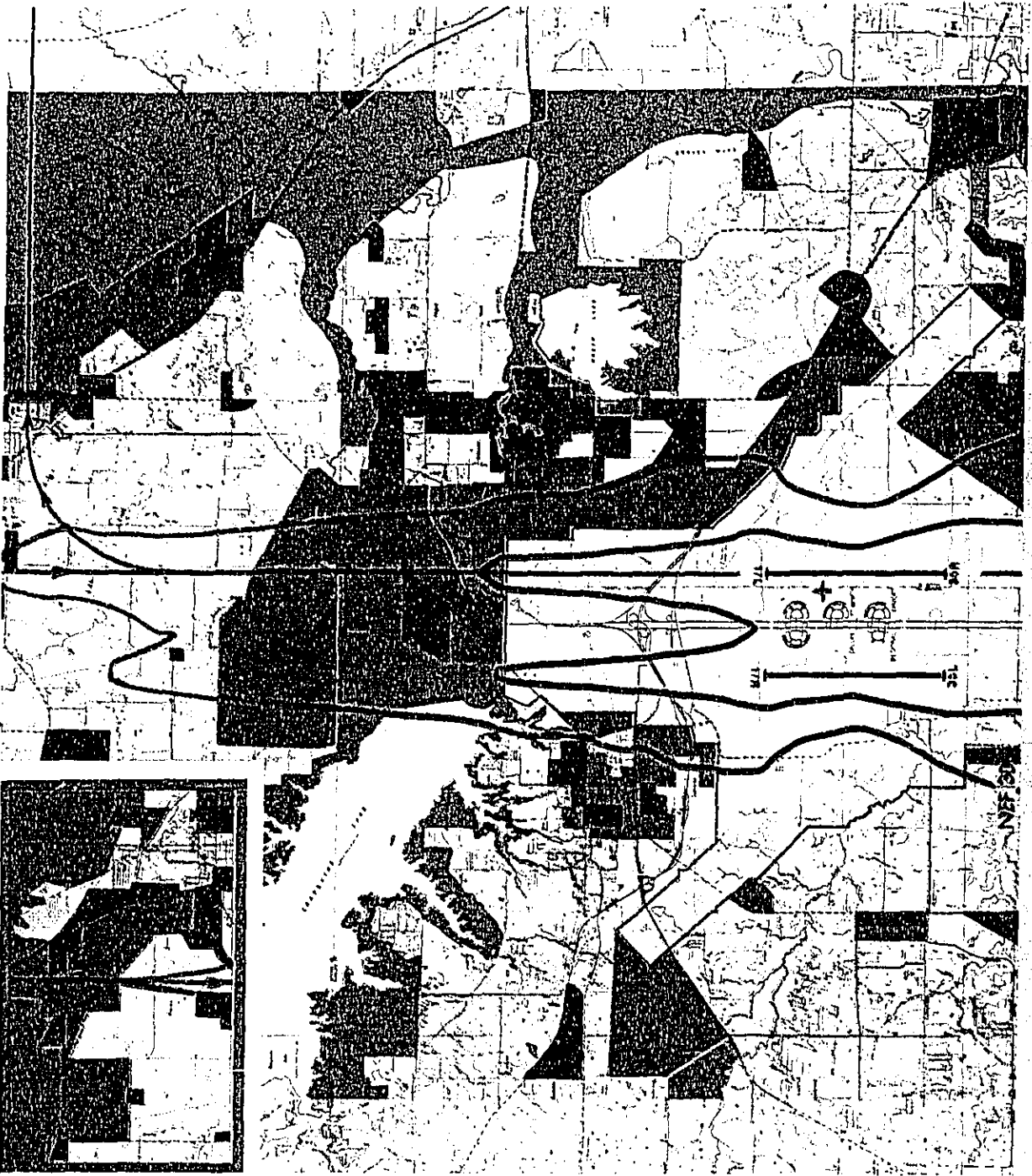


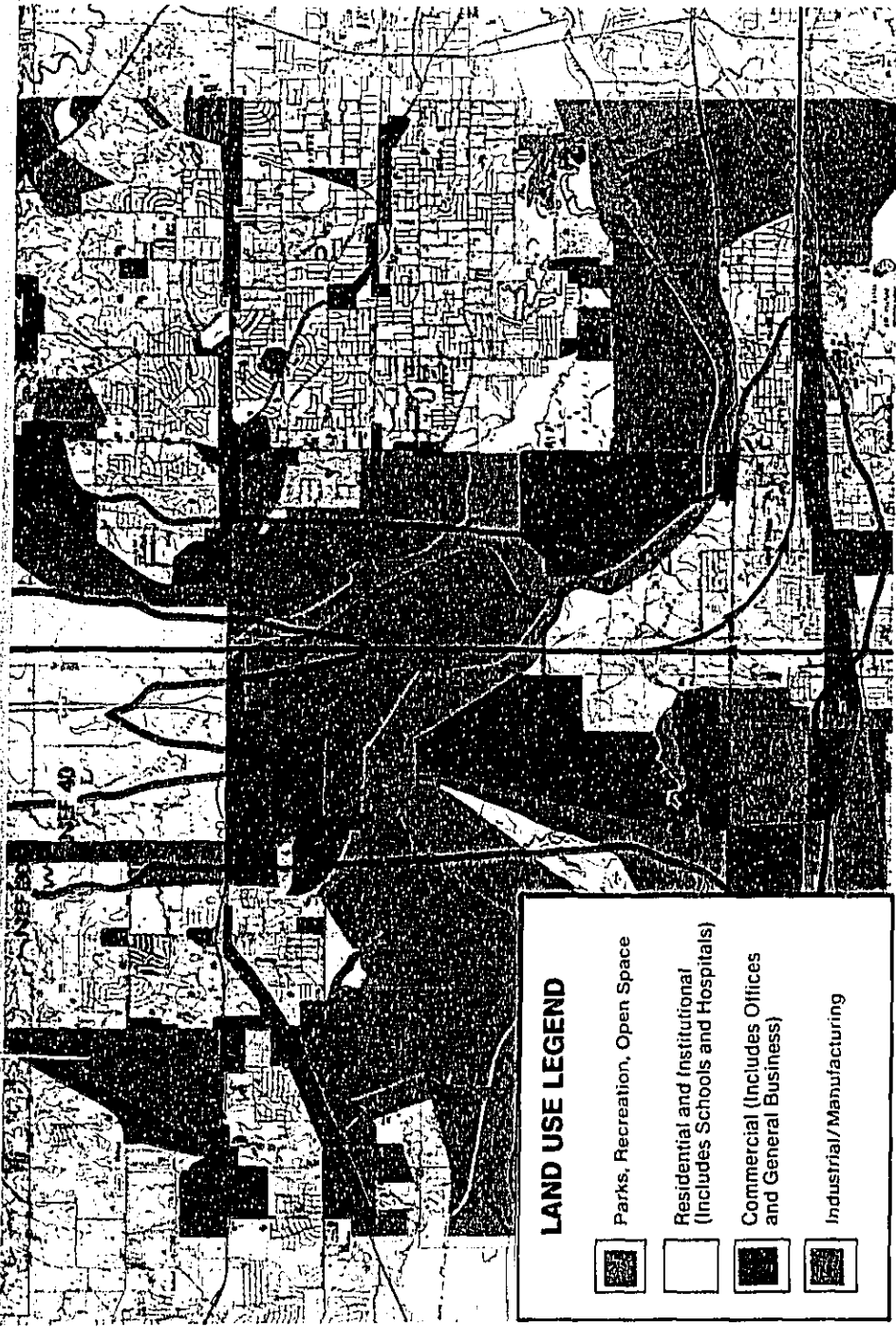
A-96-01

II-A-942





JOINS INSET AT LEFT

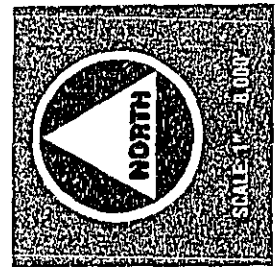


SECTIONED DOCUMENT

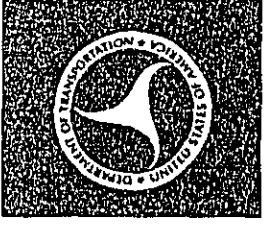


**LAND USE LEGEND**

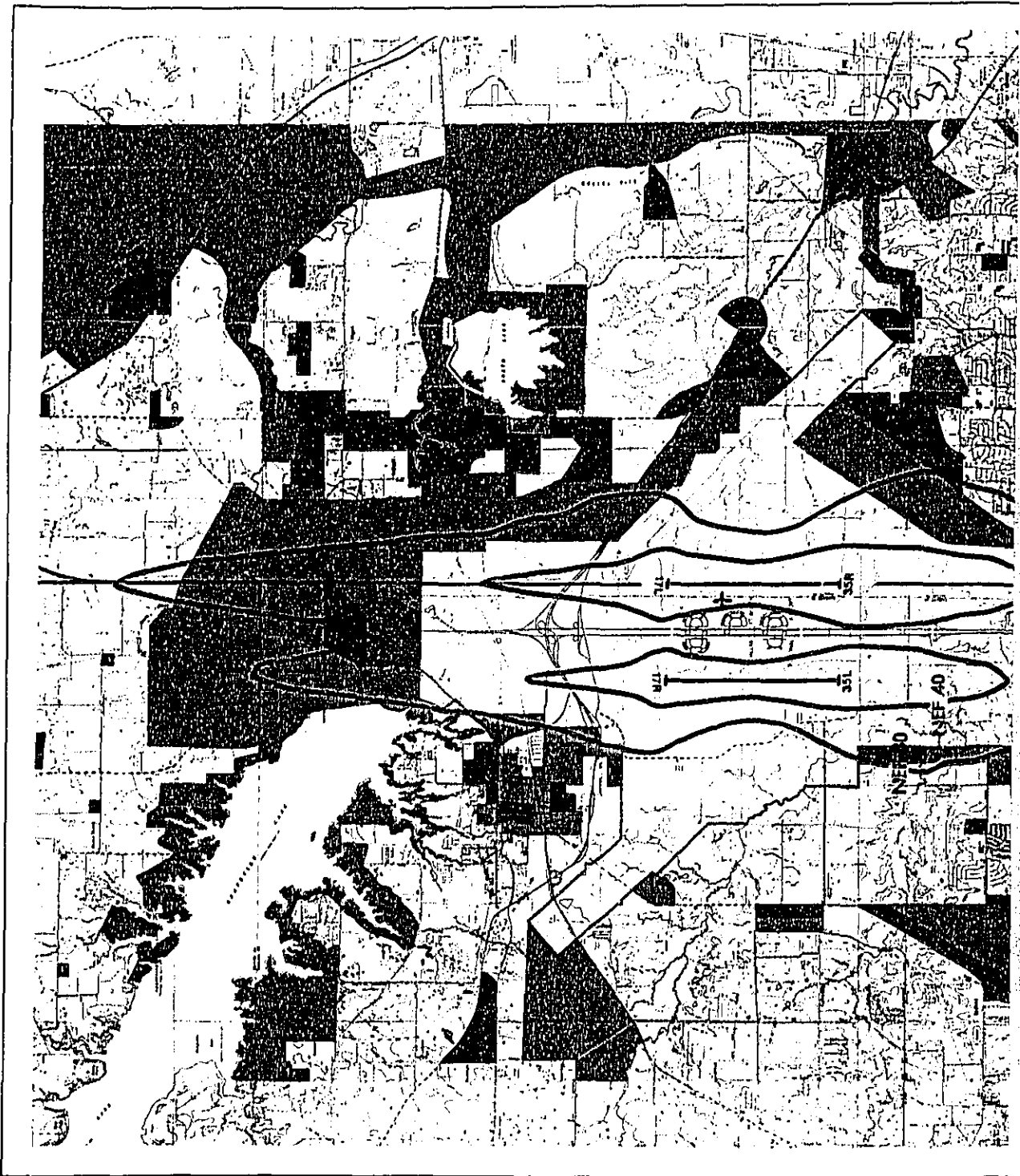
-  Parks, Recreation, Open Space
-  Residential and Institutional  
(Includes Schools and Hospitals)
-  Commercial (Includes Offices  
and General Business)
-  Industrial/Manufacturing



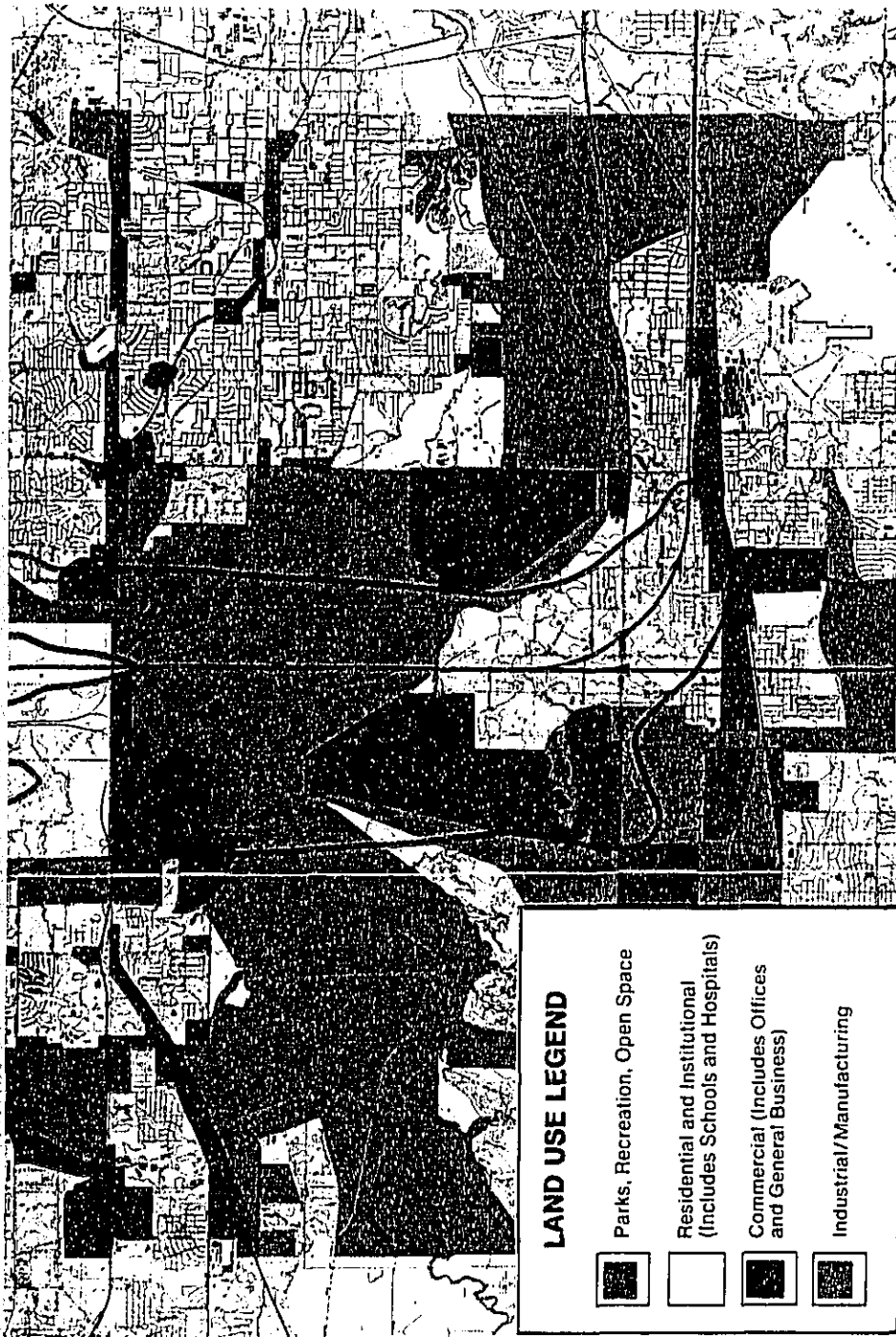
**FIGURE DFW-1  
DALLAS-FORT WORTH REGIONAL AIRPORT (DFW)  
1978 NOISE EXPOSURE FORECAST (NEF) 30/40  
FORECASTED BASELINE AIRCRAFT DAILY OPERATIONS**







**SECTIONED DOCUMENT**

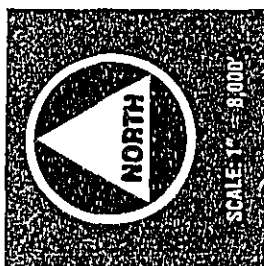


SECTIONED DOCUMENT



**LAND USE LEGEND**

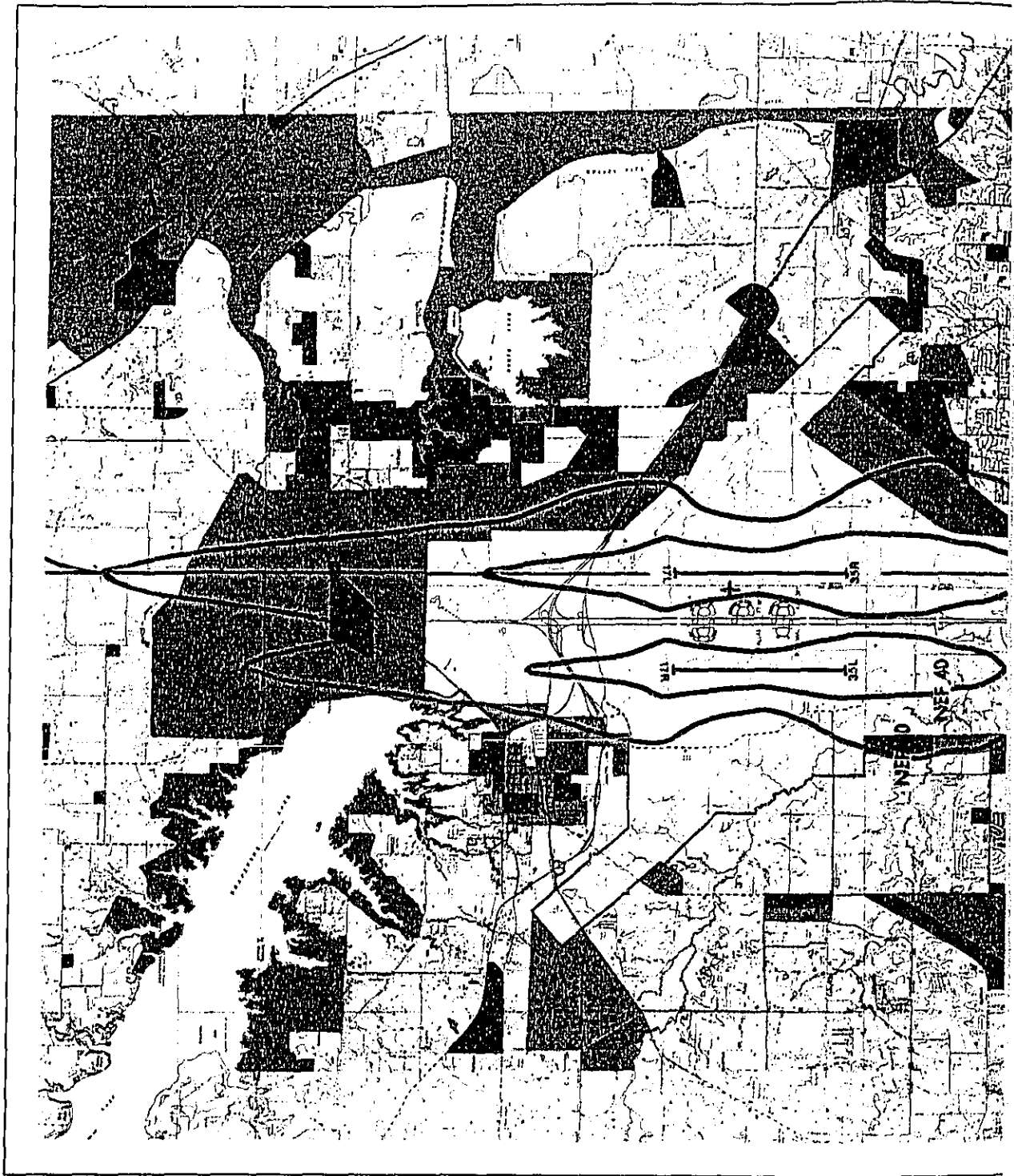
-  Parks, Recreation, Open Space
-  Residential and Institutional  
(Includes Schools and Hospitals)
-  Commercial (Includes Offices  
and General Business)
-  Industrial/Manufacturing



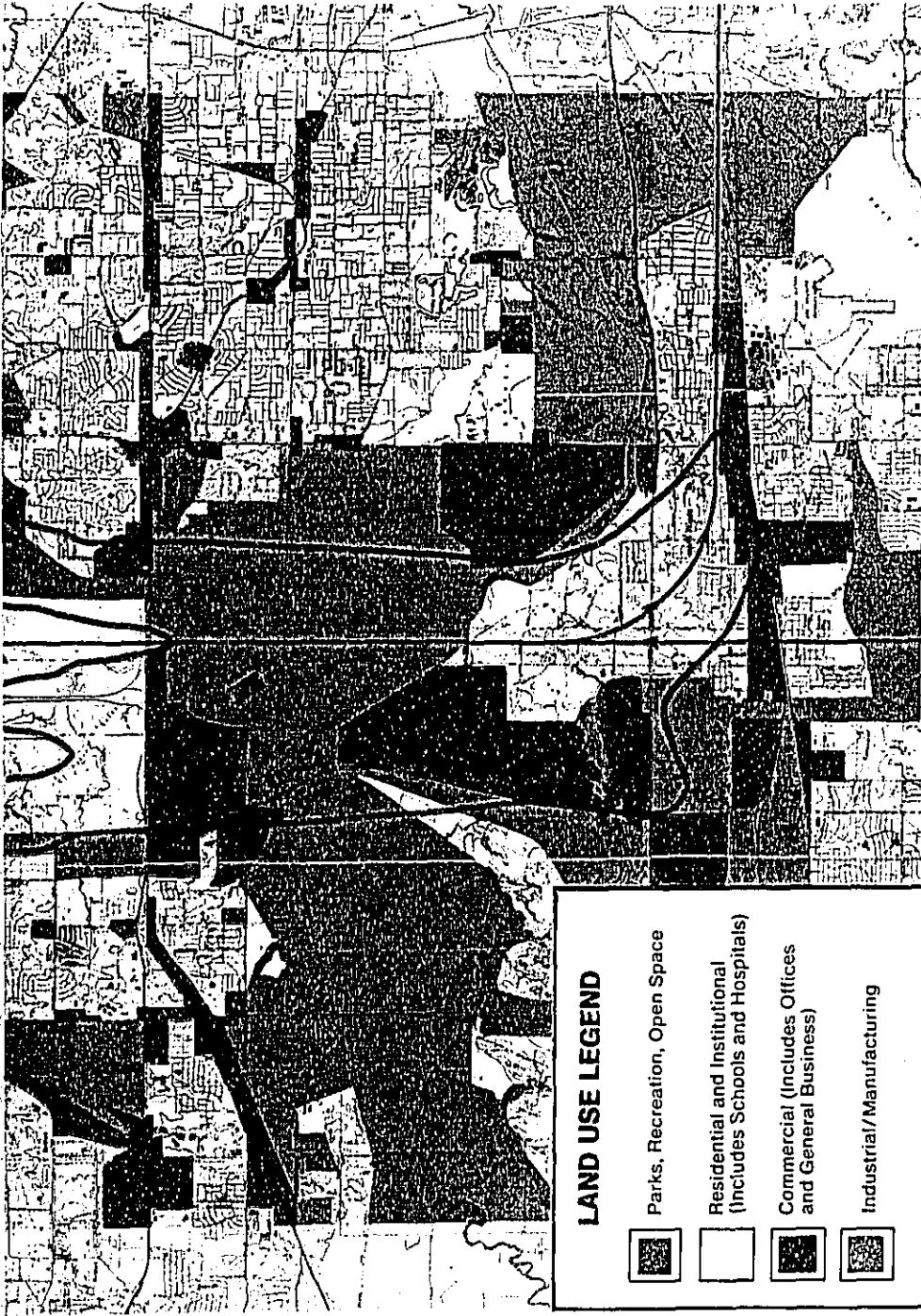
**FIGURE DFW-5**  
**DALLAS-FORT WORTH REGIONAL AIRPORT (DFW)**  
**1987 NOISE EXPOSURE FORECAST (NEF) 30/40**  
**FORECASTED BASELINE AIRCRAFT DAILY OPERATIONS**  
**ALL JT3D AND JT8D ENGINES TREATED WITH QUIET NACELLES**







SECTIONED DOCUMENT

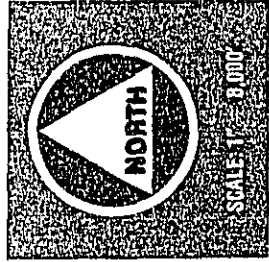


SECTIONED DOCUMENT

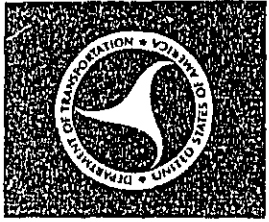


**LAND USE LEGEND**

-  Parks, Recreation, Open Space
-  Residential and Institutional  
(Includes Schools and Hospitals)
-  Commercial (Includes Offices  
and General Business)
-  Industrial/Manufacturing



**FIGURE DFW-6**  
**DALLAS-FORT WORTH REGIONAL AIRPORT (DFW)**  
**1987 NOISE EXPOSURE FORECAST (NEF) 30/40**  
**FORECASTED BASELINE AIRCRAFT DAILY OPERATIONS (MODIFIED)**  
**ALL JT3D AND JT8D ENGINES TREATED WITH QUIET NACELLES**  
**8 CONCORDE OPERATIONS WEEKLY (4 FLIGHTS)**



SECTIONED DOCUMENT